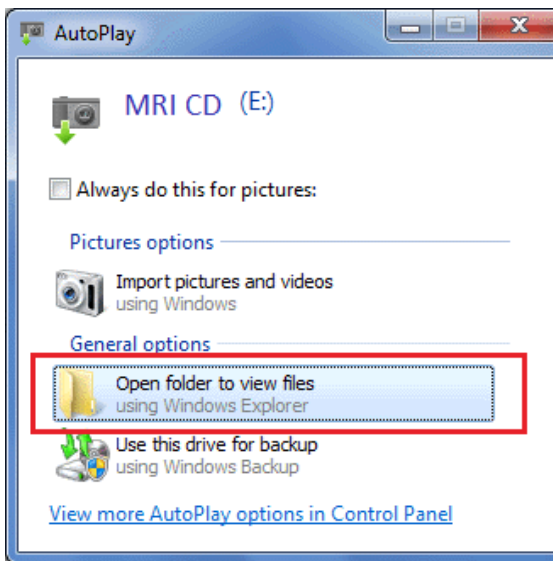


# MRI Upload Instructions

If you have an MRI CD, please follow these steps:

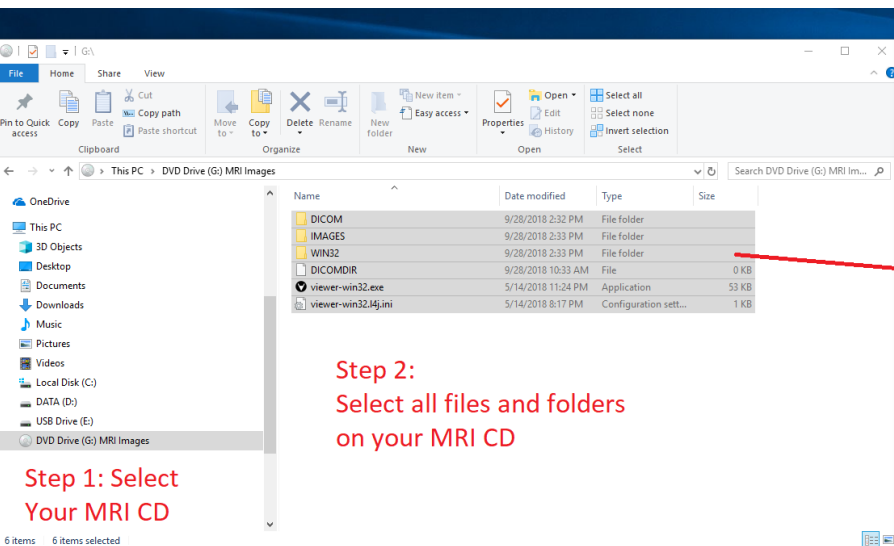
1) Insert your CD into your computer

If you have a **Windows PC**, please click on "Open folder to view files" on the pop up window with the CD image. On a **Mac**, click the CD Icon on your desktop



If you do not see a popup box after inserting your CD, hold the Windows key and press E, then click on "My Computer" or "This PC" on the left hand side of the window. Double click the CD drive with the MRI disc to open it.

2) Drag all of the folders and files on your CD over to the upload area.



\*\*\*Deuk Spine Institute is not responsible for returning MRI discs or images. If you wish to retain the originals, please make an additional copy\*\*\*

If you have an MRI CD, please follow these steps:  
1) Insert your CD into your computer  
- If you have a Windows PC, please click on "Open folder to view files" on the pop up window with the CD image.  
- If you have a Mac, click the CD icon that has the CD image.  
2) Drag the folder labeled "DICOM" or "DICOMDIR" to the upload area below.

If you have MRI images on your phone or tablet, please follow these steps:  
1) Click the upload files button and select all the files you wish to upload.

Upload your MRI Images \*



Please confirm that you are not a robot.

I'm not a robot

reCAPTCHA  
Privacy - Terms

SUBMIT YOUR REVIEWS

Step 3:  
Drag the selected files and folders to the upload area